

# EL-USB-LITE



## Low Cost USB Temperature Data Logger

- -10 to 50°C (14 to 122°F) measurement range
- Stores over 4,000 readings
- 30 minute logging rate
- Immediate and delayed logging start
- User-programmable alarm thresholds
- Status indication via red and green LEDs
- EasyLog software available as a free download



This standalone data logger measures and stores over 4,000 temperature readings over a -10 to +50°C (+14 to +122°F) range at a resolution of 1°C (2°F) at a fixed 30 minute sample rate.

The user can easily set up the logger and view downloaded data by plugging the data logger into a PC's USB port and using the available free downloadable EasyLog software. Data can then be graphed, printed and exported to other applications.

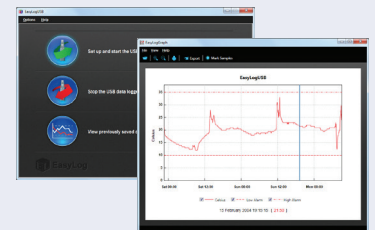
The data logger is supplied complete with a CR1620 lithium coin cell, which can typically allow logging for up to 1 month.

### EASYLOG SOFTWARE

Lascar's EasyLog control software is available as a free download from [www.easylogusb.com](http://www.easylogusb.com). Easy to install and use, the control software is compatible with 32-bit and 64-bit versions of Windows XP, Vista, 7, 8 and 10. The software is used to set up the logger, download, graph and annotate data or export in Excel, PDF and jpeg formats.

The software allows the following parameters to be configured:

- Logger name
- Logging rate every 30 minutes
- High and low alarms
- Immediate and delayed logging start



Download the latest version of the software free of charge from [www.easylogusb.com](http://www.easylogusb.com)

### SPECIFICATIONS

Measurement range	-10 to 50°C (14 to 122°F)
Internal resolution	1°C (2°F)
Accuracy (overall error)	±2.5°C (4.5°F)
Logging rate	Every 30 minutes
Operating temperature range	-10 to 50°C (14 to 122°F)
Battery Life	1 Month
Readings	4,080
Dimensions	68 x 18.5 x 18.5mm (2.67 x 0.72 x 0.72")





### INCLUDED IN THE BOX

**BAT 3VX5** Includes x1 3V battery



### LED STATUS INDICATION

The EL-USB-LITE features a bi-colour LED indicate logging and alarm status. To save power the status indication only operates when the push button is pressed for a short while.

	<b>Green single flash</b> The data logger is currently logging. No alarm.
	<b>Red single flash</b> The data logger is currently logging. Low alarm.
	<b>Red double flash</b> The data logger is currently logging. High alarm.
	<b>No LEDs flash</b> The data logger is stopped, the battery is empty or there is no battery fitted.

### BATTERY INFORMATION

#### Replacement

We recommend that you replace the battery every month, or prior to logging critical data. The data logger does not lose its stored readings when the battery is discharged or replaced; however, the data logging process will stop and will not resume until the battery is replaced and the logger restarted by EasyLog software.

For maximum logging life, only use Maxell or Panasonic CR1620 Lithium batteries. Before replacing please remove the EL-USB-LITE from the PC.

#### WARNING

Handle lithium metal batteries carefully, observe warnings on battery casing. Dispose of in accordance with local regulations.